



**REMA♻️SOL**



# Introduction to REMASOL

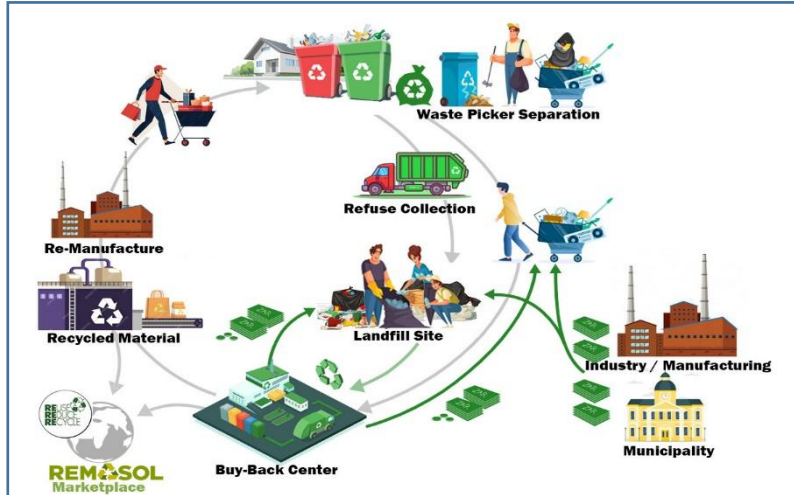
## SUSTAINABLE DEVELOPMENT GOALS



**REMASOL** is an autonomous integrated Waste and Recycling platform that empowers organisations to support and execute processes that take advantage of the power of waste in accordance with **SDG** goals.

In many cases, a lack of data and reliance on very basic waste classification prevents implementation of sustainable projects.

A manufacturer producing a variety of items relying on waste code classification is not able to clearly understand the material opportunities and how *Extended Producer Responsibility* plays out within their business by applying **Zero-Waste Management (ZWM)** methodology.



Our three main areas of Impact.

1. To educate and encourage indigent and disadvantaged, formalize their business & generate sustainable income;
2. **Women and youth unemployment** remains one of the most complex yet priority issues plaguing society. By creating an open platform for all to participate based on credible data and organizational & government partnership – REMASOL aims to alleviate this plight;
3. Achieve the environmental, social and governance goals of green economies inclusively from the grassroots level up.



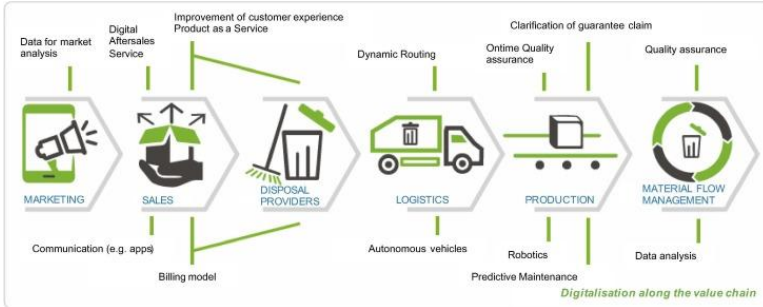
Our aim is to introduce a scalable **African Carbon Trading Exchange & Marketplace** by encouraging all Waste & Recycle Stakeholders across the value chain to be part of the growing **Net-Zero goals** using this platform!

The marketplace is an initiative that will create jobs and also open new opportunities for all involved in the green & recycling ecosystem to also be profitable while saving the environment - and assisting any business to offset their carbon footprint.

This initiative will aim to empower indigent communities to also be part of a greener Net-Zero economy!



# Introduction to REMASOL



**REMASOL** empowers our clients to deliver innovative carbon reduction sustainable initiatives within their respective corporate, government or non-profit environments.

The platform also assists automate your carbon accounting using the latest Artificial (AI) & Business Intelligence (BI) tools. For informed data-driven decisions, across your entire supply chain - in meeting your carbon audits requirements, helping you achieve clean audits in areas such as accreditation and boost your transformation scorecards & goals. REMASOL helps our clients sift through big data and discover critical insights when setting up activations and programmes.

### How to Design an Effective Deposit Return System

How the System Works

Regions with deposit return systems collect for recycling almost three times as many cans and bottles as regions without. Deposit systems are a tax-free tool to recycle virtually 100% of cans and bottles collected.

### The Four Principles of High-Performing Deposit Systems

- Performance**  
A collection target for all beverages plus a meaningful deposit delivers strong results.
- Convenience**  
The redemption system is easy, accessible and fair for everyone.
- System Integrity**  
Trust is built into the system's processes through transparent management, a data-driven clearinghouse, and reliable redemption technology.
- Producer Responsibility**  
Producers finance and invest in the system using the unredeemed deposits, commodity revenues, and an eco-modulated EPR fee.

**Net Zero** targets simply cannot be delivered without strong Value Chain partnerships.

**DRS** is a system whereby consumers buying a product pay an additional amount of money (a deposit) that will be reimbursed upon the return of the packaging or product to a collection point.

The system is based on offering an economic incentive for consumers to return empty containers to any shop to ensure that they will be reused or recycled.

DRS systems can also be constructed to help companies achieve reuse more efficiently.



**REMASOL** has been able to demonstrate in provinces like the **Eastern Cape** in partnership with several municipalities such as **Port St Johns** and **Nyandeni**. The data collected has suggested that of the over 2000+ waste pickers - women, outnumber men waste pickers in terms of contributing to waste management - moving thousands of tons of waste and recyclables across the country – weekly.

With these kinds of analytics, Remasol is able to help encourage job creation and entrepreneurship as we track waste pickers - yet are the common denominator in contributing critical component to the country's sustainability goals.

